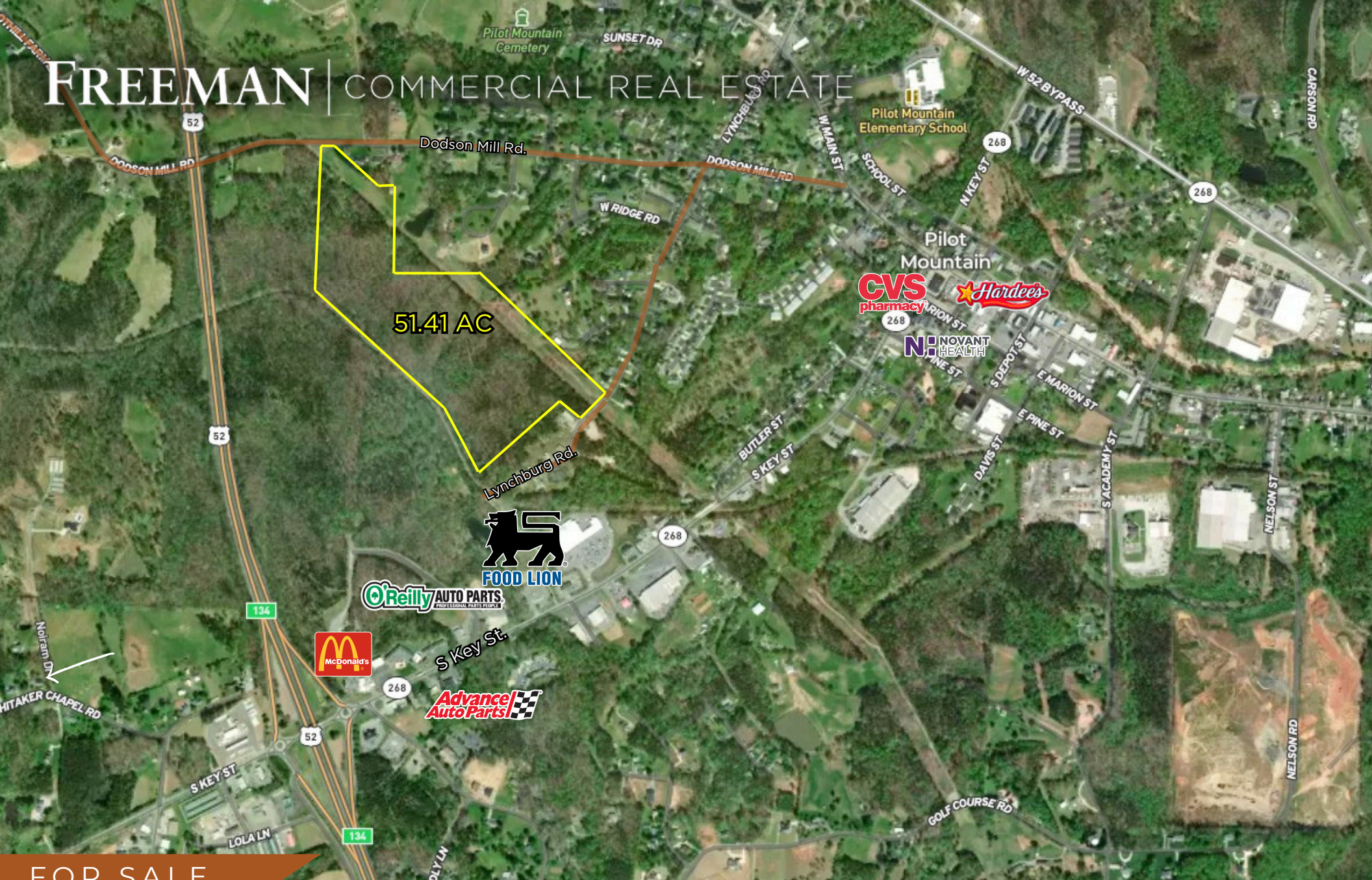


FREEMAN | COMMERCIAL REAL ESTATE



51.41 AC

FOR SALE

MULTIFAMILY/SINGLE FAMILY
DEVELOPMENT OPPORTUNITY, 51.41 +/- AC
DODSON MILL RD. | PILOT MOUNTAIN, NC

LEE CHEWNING & ABNER WRIGHT
M: 336.655.8063
O: 336.768.4410
lee@freemancommercial.com
freemancommercial.com

LOCATION

ADDRESS	Dodson Mill Rd.
CITY, STATE, ZIP	Pilot Mountain, NC 27041
COUNTY	Surry County

PROPERTY INFORMATION

PIN	5966-00-32-5003 5966-14-22-7634 5966-14-23-6269
ZONING	RA
LOT SIZE	51.41 +/- AC
SALE PRICE	Please call for pricing

HIGHLIGHTS

- Multifamily/Single family potential with current zoning Multi-family.
- Water on site
- Sewer connection available, pump station may be needed
- Access from Dodson Mill Rd. & Lynchburg Rd.



DEMOGRAPHICS



POPULATION

3 mi. - 5,233
5 mi. - 10,300
7 mi. - 17,633



HOUSEHOLDS

3 mi. - 2,347
5 mi. - 4,389
7 mi. - 7,466



AVG HH INCOME

3 mi. - \$104,876
5 mi. - \$100,554
7 mi. - \$94,395



MEDIAN AGE

45

LEE CHEWNING

M: 336.655.8063
lee@freemancommercial.com

ABNER WRIGHT

O: 336.768.4410
abner@freemancommercial.com

FOR SALE

PROPOSED SITE PLAN - DODSON MILL RD., PILOT MOUNTAIN





LEE CHEWNING

M: 336-655-8063
lee@freemancommercial.com

ABNER WRIGHT

O: 336.768.4410
abner@freemancommercial.com

FREEMAN | COMMERCIAL REAL ESTATE

1255 CREEKSHIRE WAY, STE 200
WINSTON-SALEM, NC 27103
336.768.4410

freemancommercial.com

No warranty or representation is made to the accuracy of the information contained herein. All information is subject to change or withdrawal. No liability is assumed for any inaccuracy of any information.