

FOR LEASE



95,000 VPD



Westbrook Plaza Dr.

Westgate Center Dr.

WELL-POSITIONED OFFICE  
SPACE AVAILABLE, WINSTON-SALEM  
EASILY ACCESSIBLE TO I-40/HWY 421

CHARLIE FREEMAN  
SHAWN O'NEILL  
336.768.4410  
charlie@freemancommercial.com  
shawn@freemancommercial.com  
FREEMANCOMMERCIAL.COM

# PROPERTY HIGHLIGHTS

## WESTBROOK OFFICE PARK

WINSTON-SALEM, NC 27103

- Prime location off I-40 & Stratford Rd in Winston-Salem's largest retail market
- Surrounded by hotels, restaurants, banks and retail centers and minutes from downtown Winston-Salem, high traffic Hanes Mall corridor, Atrium Health/Wake Forest Baptist and Novant Health
- Key tenants include professional services, healthcare providers, government agencies, and corporate offices



**Ample Parking**



**ACCESSIBILITY**

Excellent access to heavily traveled Stratford corridor, I-40 & Hwy 421



**AVERAGE HH INCOME**

3 mi. - \$101,313

5 mi. - \$103,564

7 mi. - \$96,901



**POPULATION**

3 mi. - 61,554

5 mi. - 152,969

7 mi. - 261,673



1348 Westgate Center Dr.  
144 +/- SF Available



1495 Rymco Drive  
735-856 +/- SF Available



1321 Westbrook Plaza Dr.  
320-2,018 +/- SF Available



1540 Westbrook Plaza Dr.  
975 +/- SF Available

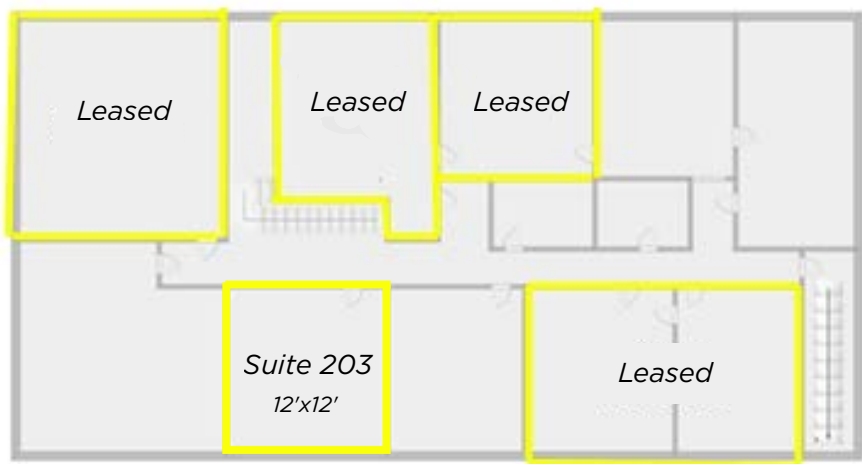
1

# 1348 WESTGATE CENTER DRIVE WINSTON-SALEM, NC 27103

## AVAILABLE SF

SUITE	SIZE	LEASE RATE
Suite 203	144 SF	\$325.00/per mo.

## Second Floor

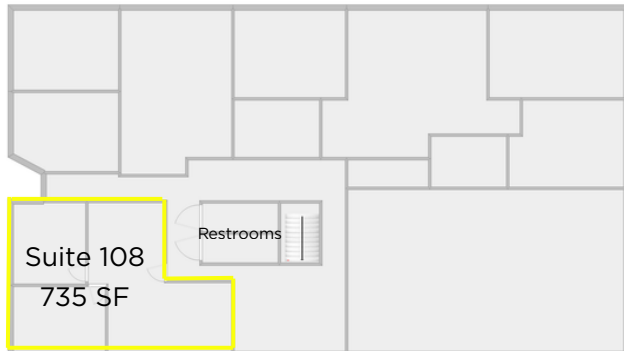


# 1495 RYMCO DRIVE WINSTON-SALEM, NC 27103

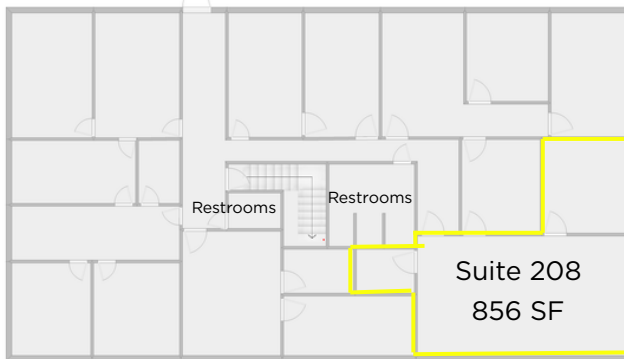
## AVAILABLE SF

SUITE	SIZE	LEASE RATE
Suite 108	735 SF	\$950.00/per mo.
Suite 208	856 SF	\$1,100.00/per mo.

### First Floor



### Second Floor

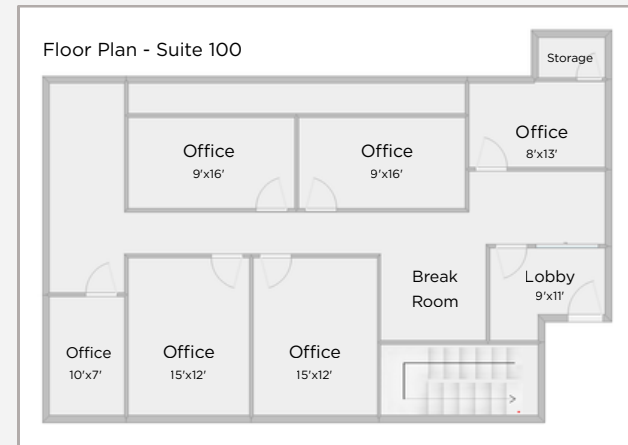


1321 WESTBROOK PLAZA DRIVE  
WINSTON-SALEM, NC 27103



AVAILABLE SF

SUITE	SIZE	LEASE RATE
Suite 100	2,018 SF	\$3,200/per mo.



SUITE	SIZE	LEASE RATE
Suite 210	1,660 SF	\$2,400/per mo.
Suite 215	1,561 SF	\$2,250/per mo.
Suite 220	320 SF <i>Single Office</i>	\$500/per mo.
Suite 280	445 SF <i>2-Office Suite</i>	\$850/per mo.

FOR LEASE

OFFICE AVAILABLE, WINSTON-SALEM, NC 27103



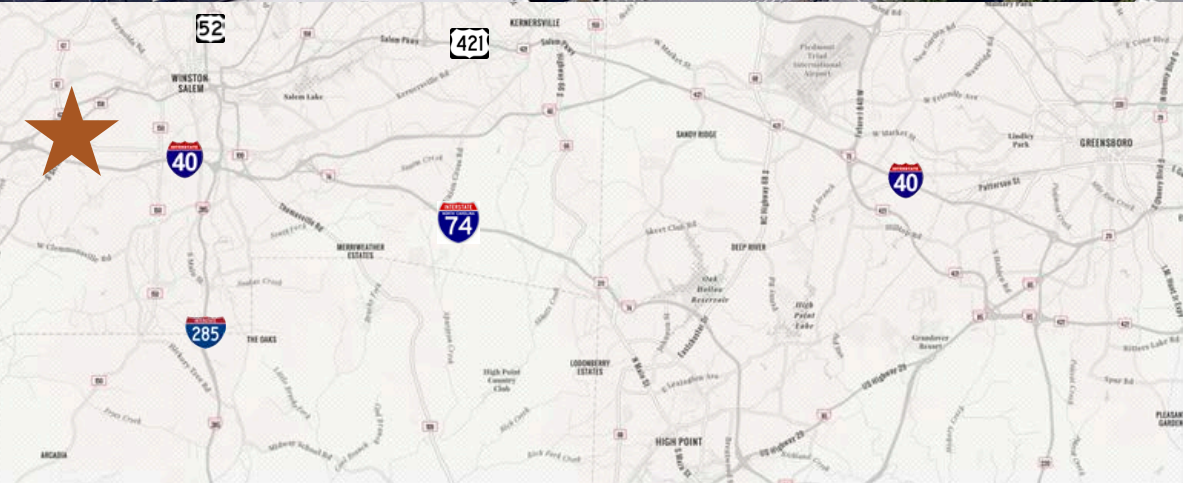
**HANES MALL**

95,000 VPD

Hanes Mall Blvd.

Stratford Rd.

Westbrook Plaza Dr.



CHARLIE FREEMAN  
336.768.4410  
charlie@freemancommercial.com

SHAWN O'NEILL  
336.768.4410  
shawn@freemancommercial.com

FREEMANCOMMERCIAL.COM