



Downtown  
Winston-Salem

NC School  
of the Arts

Sunnyside Avenue

FOR LEASE

FLEX WAREHOUSE WITH OFFICE

2101 SUNNYSIDE AVENUE | WINSTON-SALEM, NC

Lee Chewning & Abner Wright

**FREEMAN** | COMMERCIAL REAL ESTATE

336.768.4410  
lee@freemancommercial.com  
abner@freemancommercial.com



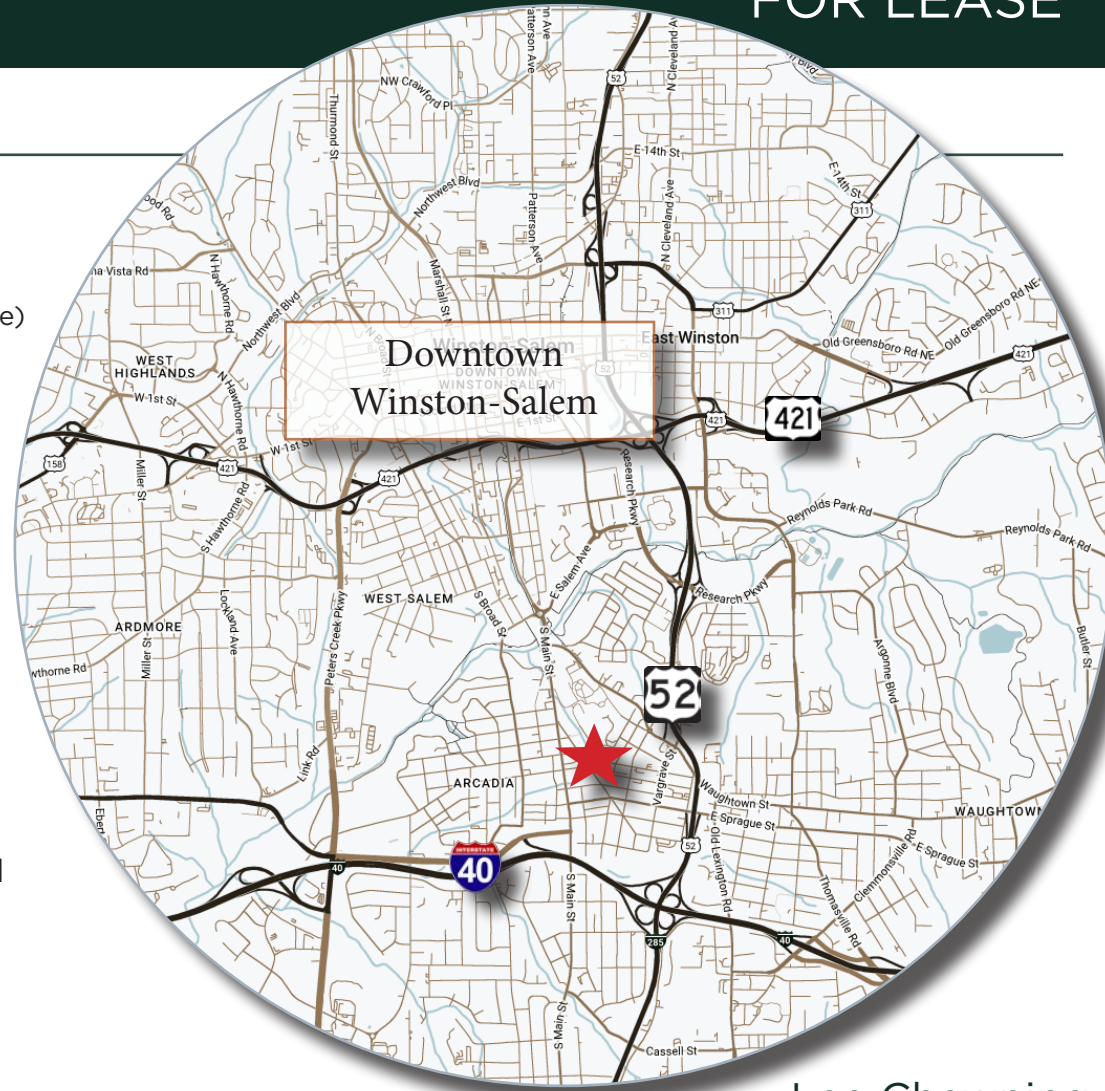
## PROPERTY SUMMARY

2101 Sunnyside Avenue  
Winston-Salem, NC 27127

BLDG SIZE: 12,300 +/- SF (warehouse & conditioned office)  
LAND AREA: .51 +/- AC  
ZONING: LI (Light Industrial)  
LEASE RATE: \$7.00/PSF NNN

## HIGHLIGHTS

- 12,300 SF warehouse & conditioned office space with recent upgrades
- Fenced parking and laydown yard
- 5 rollup/drive-in doors
- Box truck (2 foot) dock
- Convenient to downtown Winston-Salem and NC School of the Arts with easy access to I-40 & Hwy 52



DEMOGRAPHICS	3 MILES	5 MILES	7 MILES
POPULATION	70,677	150,111	243,227
HOUSEHOLDS	30,592	61,363	100,584
TOTAL BUSINESSES	3,826	6,990	9,660

Lee Chewning

O: 336-768-4410

M: 336-655-8063

lee@freemancommercial.com

Abner Wright

O: 336-768-4410

abner@freemancommercial.com

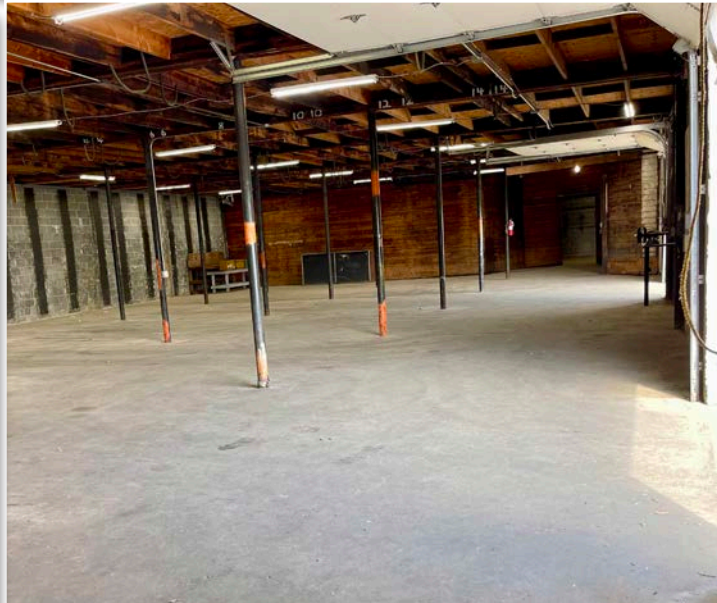




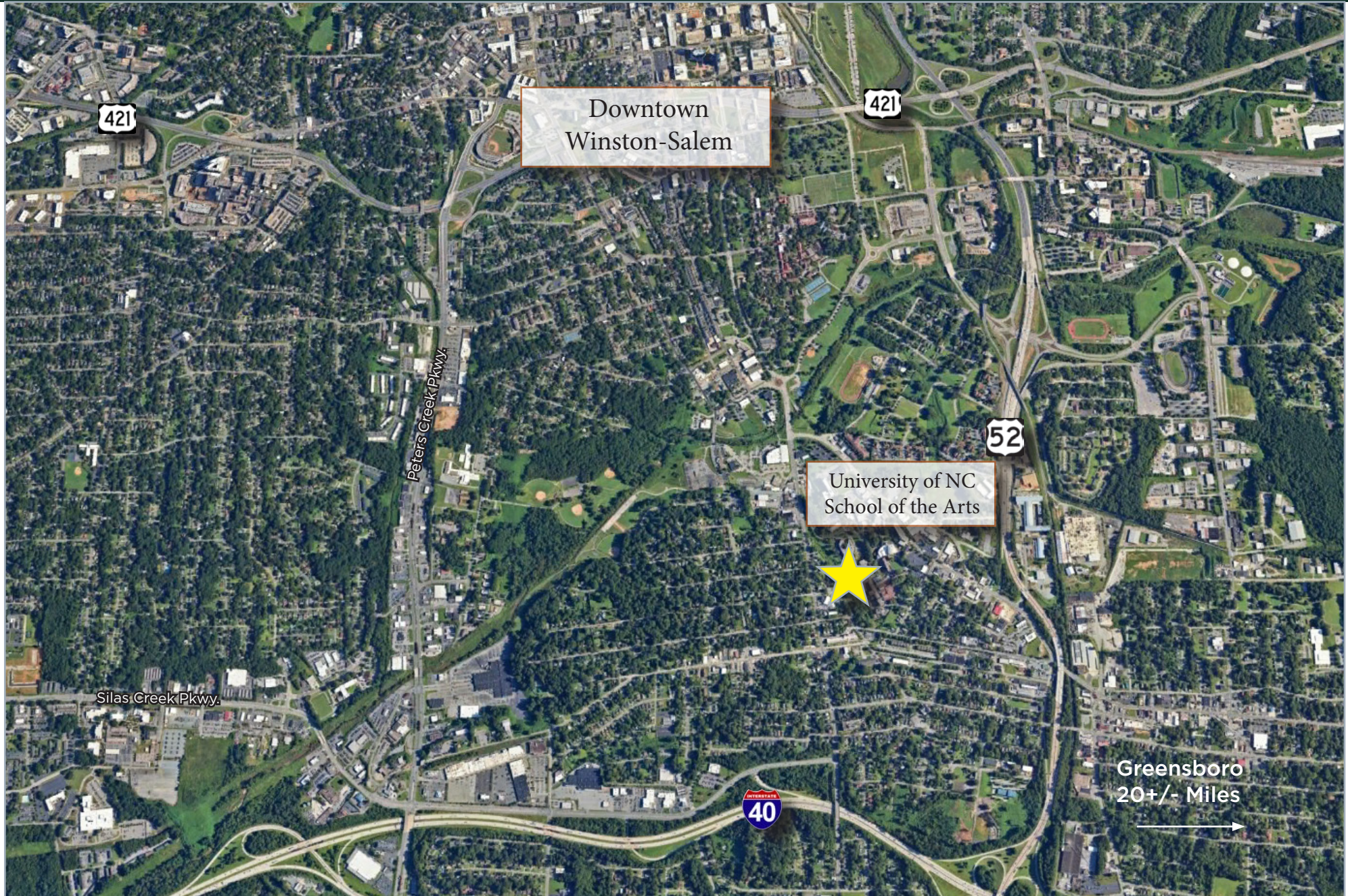
1255 CREEKSHIRE WAY SUITE 200 WINSTON-SALEM NC 27103 | [WWW.FREEMANCOMMERCIAL.COM](http://WWW.FREEMANCOMMERCIAL.COM)

No warranty or representation is made to the accuracy of the information contained herein.  
All information is subject to change or withdrawal. No liability is assumed for any inaccuracy of any information.









1255 CREEKSHIRE WAY SUITE 200 WINSTON-SALEM NC 27103 | [WWW.FREEMANCOMMERCIAL.COM](http://WWW.FREEMANCOMMERCIAL.COM)

No warranty or representation is made to the accuracy of the information contained herein.  
All information is subject to change or withdrawal. No liability is assumed for any inaccuracy of any information.