

FREEMAN

COMMERCIAL REAL ESTATE

New Development
150 +/- Unit Multi-family
& Retail

Clemmons
Town Center
312 Unit
Luxury
Apartments



65,500 VPD

37,500 VPD

Lewisville Clemmons Rd.

Peace Haven Rd.

FOR LEASE

JOIN HEARTLAND DENTAL & HUMMUS REPUBLIC!

1,500 SF - 4,500 SF, PRIME RETAIL
CLEMMONS TOWN CENTER | CLEMMONS, NC



PROPERTY SUMMARY

3487 GENTRY LANE
CLEMMONS, NC 27012

BLDG SIZE: 9,750 +/- SF
 AVAILABLE SF: 1,500-4,500 +/- SF
 LAND AREA: 1.35 +/- AC
 ZONING: HB

HIGHLIGHTS

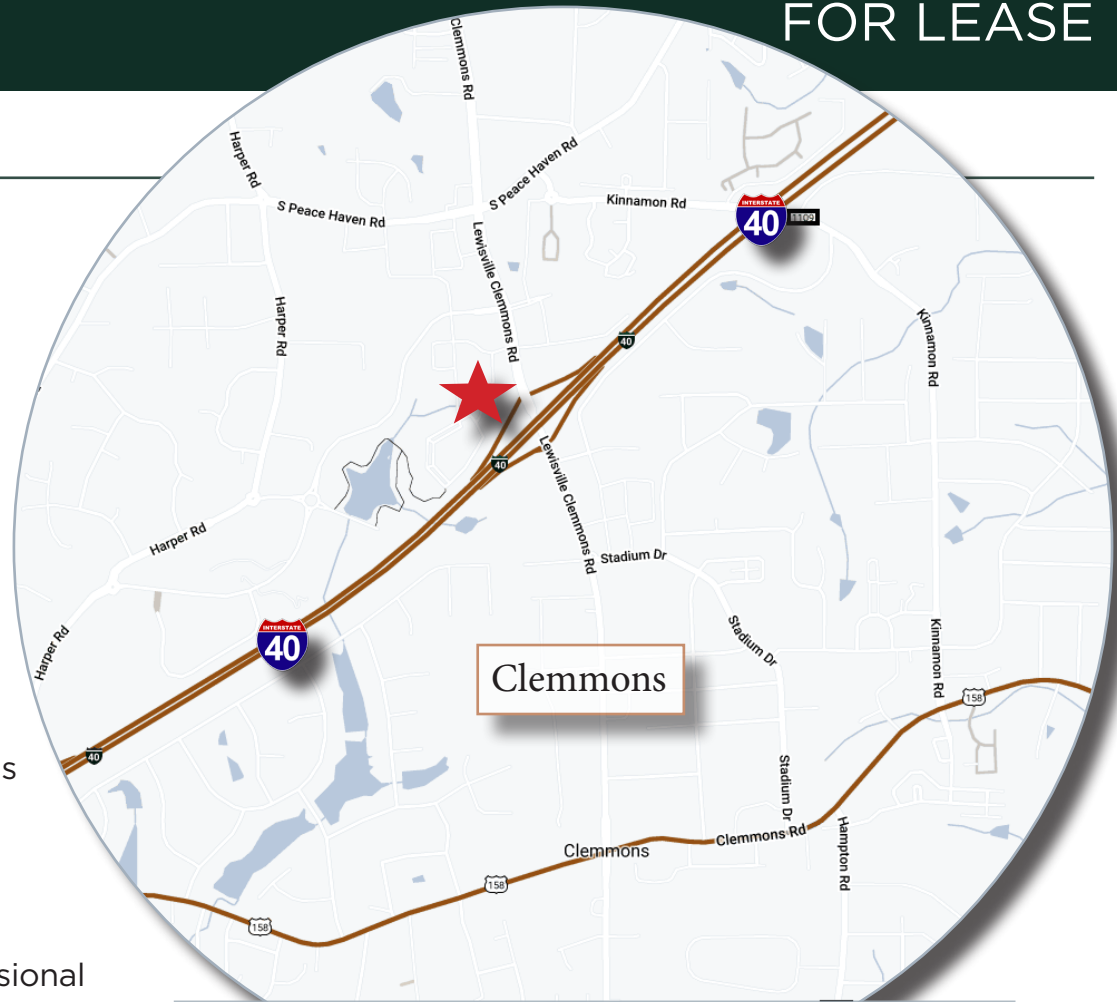
- 1,500-4,500 SF new construction in high traffic hotspot Clemmons Town Center
- Co-tenants include Heartland Dental and NEW Hummus Republic
- 312 luxury apartments within walking distance, 150+/- more planned on Village Point Drive
- Tenant uses: Retail, Take-Out Restaurant, Office, Professional Services, Healthcare
- Available Q3 2025

Lee Chewning

O: 336-768-4410

M: 336-655-8063

lee@freemancommercial.com



DEMOGRAPHICS	3 MILES	5 MILES	7 MILES
POPULATION	33,468	79,131	144,122
HOUSEHOLDS	13,547	33,828	61,637
MEDIAN AGE	44.2	43.1	42.7
AVG. HH INCOME	\$119,140	\$113,617	\$114,761

PROPOSED RENDERINGS

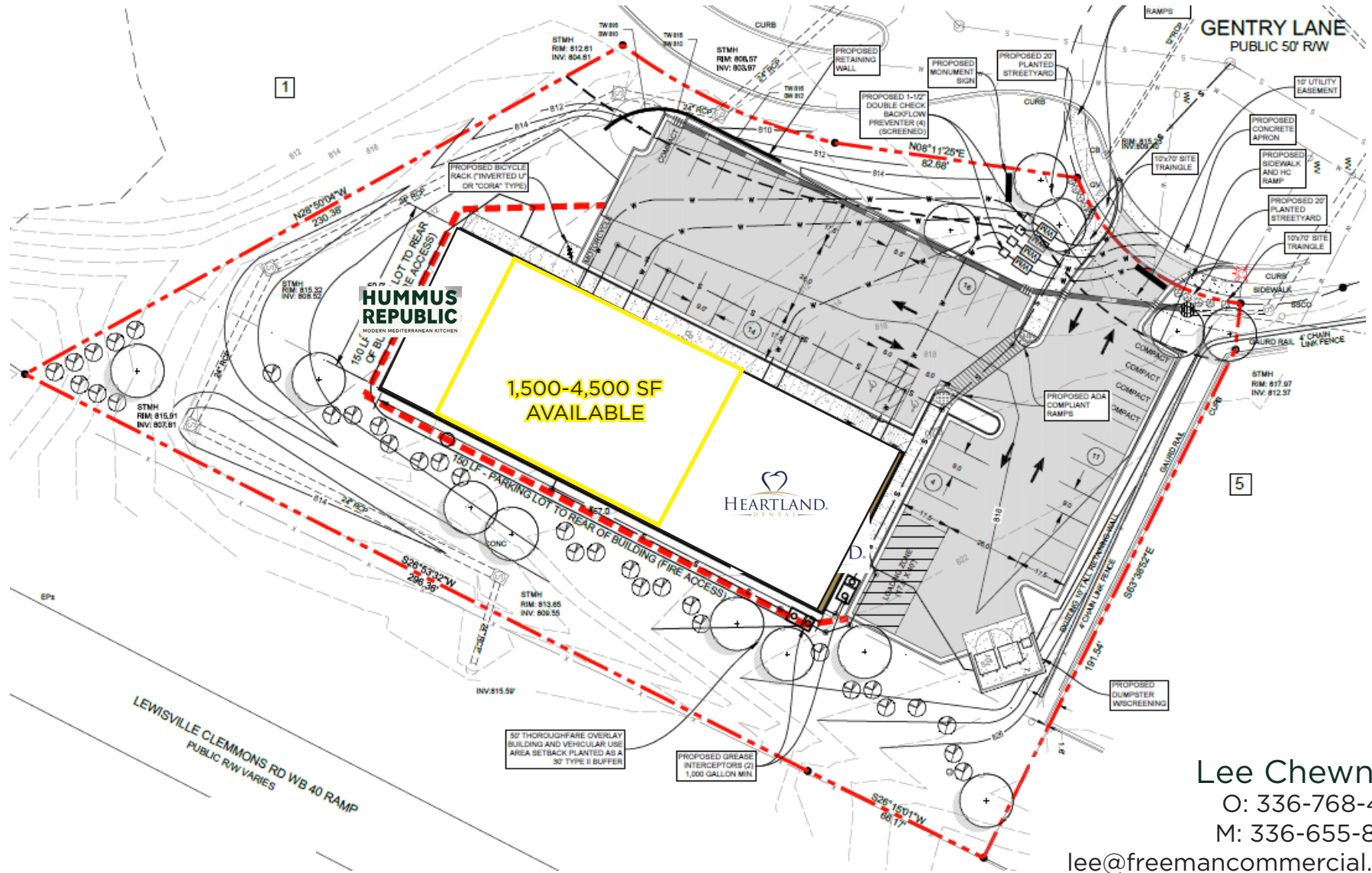


1255 CREEKSHIRE WAY SUITE 200 WINSTON-SALEM NC 27103 | WWW.FREEMANCOMMERCIAL.COM

No warranty or representation is made to the accuracy of the information contained herein.
All information is subject to change or withdrawal. No liability is assumed for any inaccuracy of any information.

PROPOSED BUILDING LAYOUT

*Possible Build to Suit



Lee Chewing
 O: 336-768-4410
 M: 336-655-8063
 lee@freemancommercial.com

No warranty or representation is made to the accuracy of the information contained herein. All information is subject to change or withdrawal. No liability is assumed for any inaccuracy of any information.



1255 CREEKSHIRE WAY SUITE 200 WINSTON-SALEM NC 27103 | WWW.FREEMANCOMMERCIAL.COM

No warranty or representation is made to the accuracy of the information contained herein. All information is subject to change or withdrawal. No liability is assumed for any inaccuracy of any information.

Village of Clemmons Overview



Discover Clemmons, a charming village in Forsyth County, NC, nestled in the picturesque Piedmont Triad just 10 miles southwest of Winston-Salem. Steeped in history, Clemmons was established in 1802 and later incorporated in 1986. The Village of Clemmons operates under a Council/Manager form of government, ensuring efficient and responsive governance.

With a thriving population of 21,823, Clemmons offers a vibrant and diverse community and is home to highly acclaimed public schools as well as the largest high school in Forsyth County. Clemmons' robust and growing economy embraces a rich and diverse faith community, thriving retail establishments and a healthy array of restaurants. Situated in the Northwestern Piedmont section of NC, Clemmons is an integral part of the Greensboro/Winston-Salem/High Point Standard Metropolitan Statistical Area.



Lee Chewning
 O: 336-768-4410
 M: 336-655-8063
lee@freemancommercial.com