

# FREEMAN

## COMMERCIAL REAL ESTATE



65,500 VPD

Randleman Rd.



Woodland Heights

21,500 VPD



33.96 AC

Ritters Lake Rd.

Ritters Logistics Center  
109 Acre  
Business Development

FOR SALE

DEVELOPMENT  
OPPORTUNITY  
33.96 +/- ACRES

BOB ANDERSON  
O: 336-768-4410  
bob@freemancommercial.com

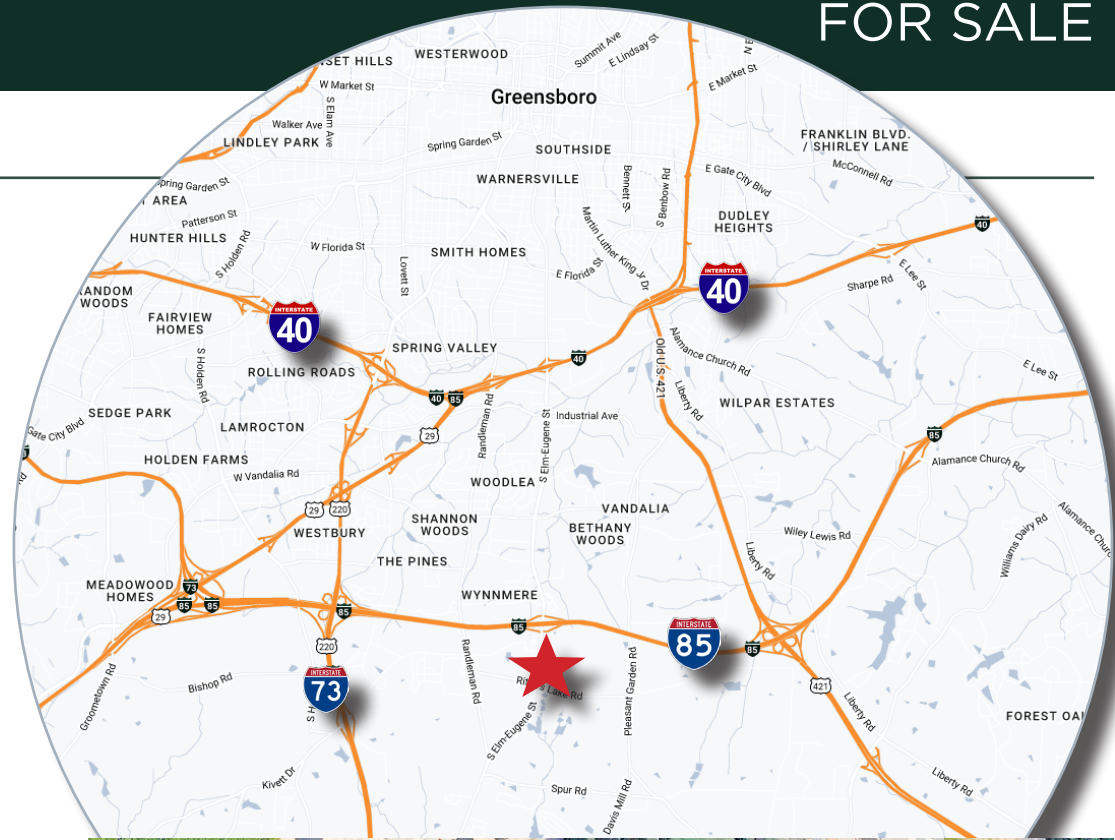
**PROPERTY SUMMARY**

Ritters Lake Road  
Greensboro, 27406  
Guilford County

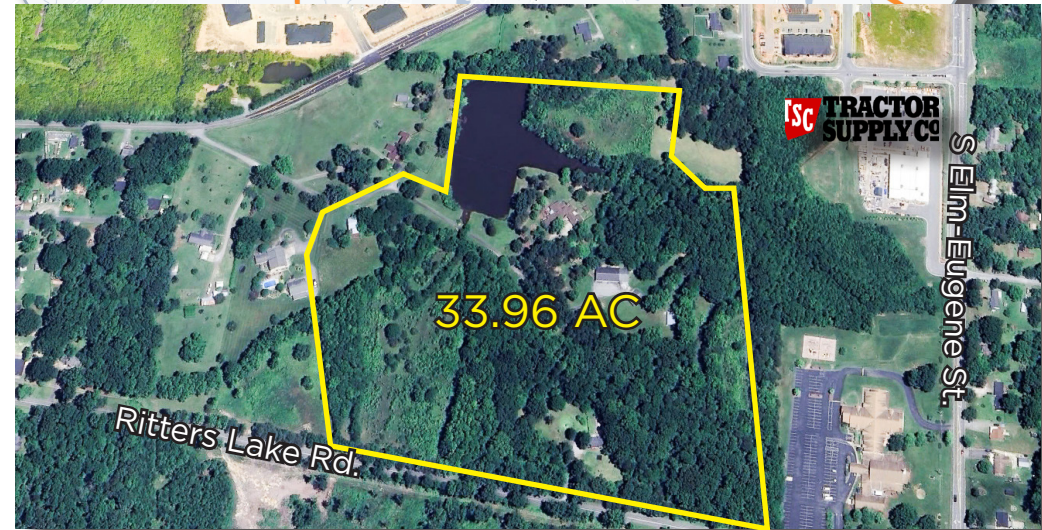
SIZE 33.96 +/- AC  
ZONING: Residential

**HIGHLIGHTS**

- Residential Development Opportunity within Greensboro city limits
- Zoned Conditional District Residential Single Family - 7
- Please call for pricing details



DEMOGRAPHICS	3 MILES	5 MILES	7 MILES
POPULATION	30,665	91,918	185,578
HOUSEHOLDS	12,950	36,133	72,459
MEDIAN AGE	37.2	34.9	33.9
AVG. HH INCOME	\$74,239	\$69,065	\$79,513



Bob Anderson  
O: 336-768-4410  
bob@freemancommercial.com