



FOR LEASE

1,875-5,625+/- SF INDUSTRIAL/FLEX

BLUE ROCK INDUSTRIAL PARK I WINSTON-SALEM, NC 27103

PROPERTY FEATURES

LOCATION

ADDRESS	691/693 Blue Rock Court
CITY, STATE, ZIP	Winston-Salem, NC 27103
COUNTY	Forsyth County

PROPERTY INFORMATION

ZONING	Industrial
AVAILABLE SF	+/- 1,875-5,625 SF
LOT SIZE	.5 +/- AC
DOCK DOORS	10'x10'
CEILING HEIGHT	21'2" peak, 15'9" at eaves
LEASE RATE	\$12.00-13.00/psf, NNN



LEE CHEWNING
ABNER WRIGHT

O: 336.768.4410

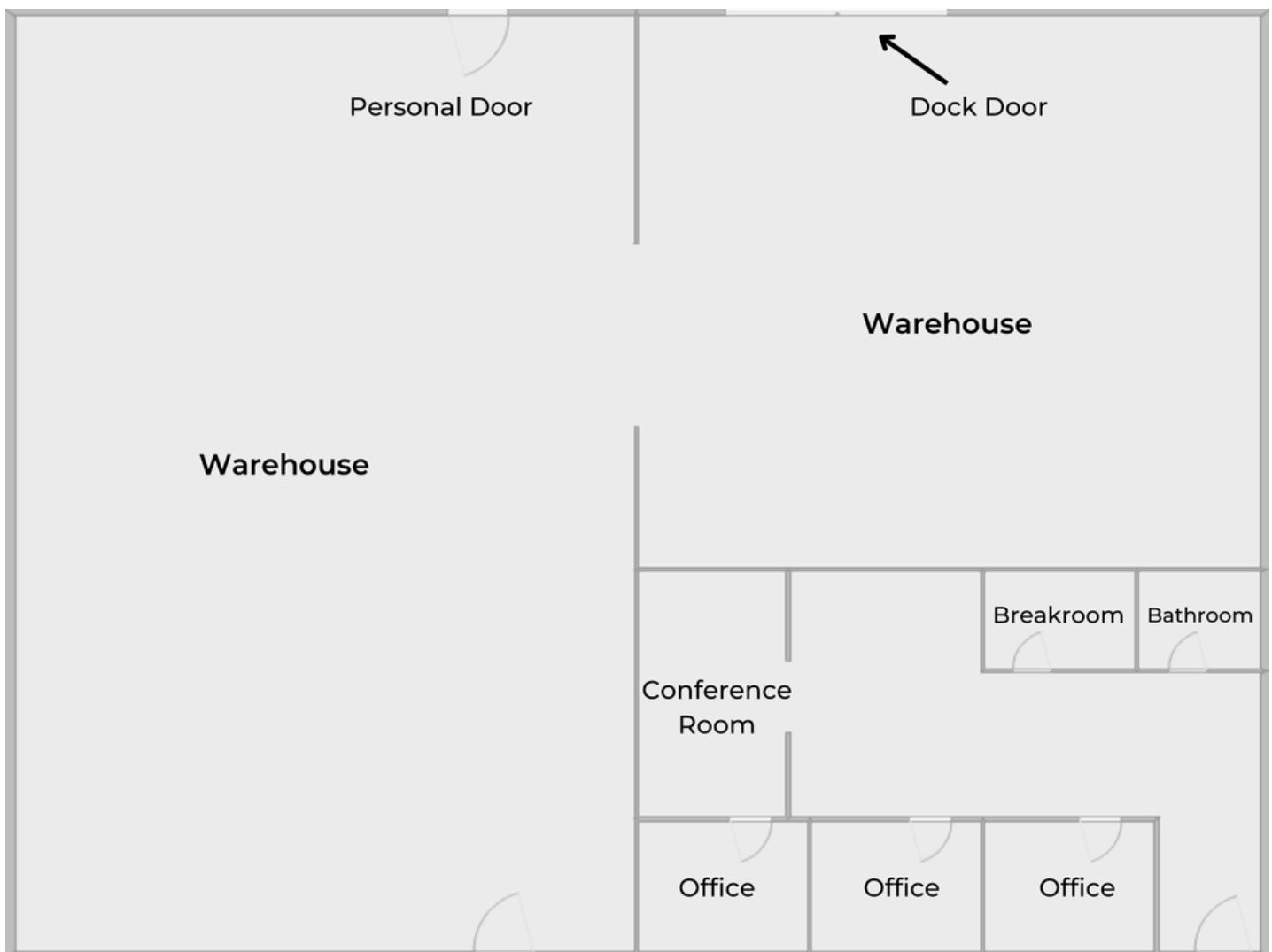
lee@freemancommercial.com

abner@freemancommercial.com

PROPERTY FEATURES- 693 BLUE ROCK CT

- +/- 5,625 Available
- 1,500 SF conditioned office with 4,120 SF heated warehouse
- 4 offices, breakroom and conference room
- Ample parking on ½ acre, with fenced laydown yard

FLOOR PLAN - 693 Blue Rock Ct





Dock Doors - 691



Dock Doors - 693