

# FREEMAN | COMMERCIAL REAL ESTATE

NOVANT  
HEALTH

421

1311 Westbrook  
Plaza Dr.

Vest Mill Rd.

POPEYES

TACO BELL

FIRST WATCH  
THE DAYTIME CAFE

158

ASHLEY

HOBBY LOBBY

Michaels

TARGET

ULTA

INTERSTATE  
40

Kirklands

KOHL'S

THE HOME  
DEPOT

Sam's  
CLUB

Walgreens

Stratford Rd.

H  
HANES  
MALL

Bj's  
RESTAURANT  
BREWHOUSE

Olive  
Garden  
ITALIAN KITCHEN

CHIPOTLE  
MEXICAN GRILL

TEXAS  
BROADBAND

DICK'S  
SPORTING GOODS

COSTCO  
WHOLESALE

INTERSTATE  
40

WELL LOCATED OFFICE SPACE FOR LEASE  
1,100-1,800 SF AVAILABLE  
1311 WESTBROOK PLAZA DR. | WINSTON-SALEM, NC

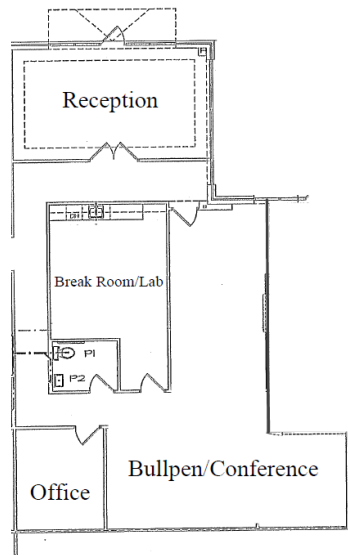
Will Nason & Charlie Freeman  
O: 336-768-4410  
will@freemancommercial.com  
charlie@freemancommercial.com



## 1311 Westbrook Plaza Dr., Ste 104 Winston-Salem, NC 27103

- 1,800 SF
- Located near Winston-Salem's busiest retail corridor
- Well maintained office space
- Full Service Lease, tenant only pays rent
- Asking Rent: \$17.00/PSF, Full Service

### FLOOR PLAN:

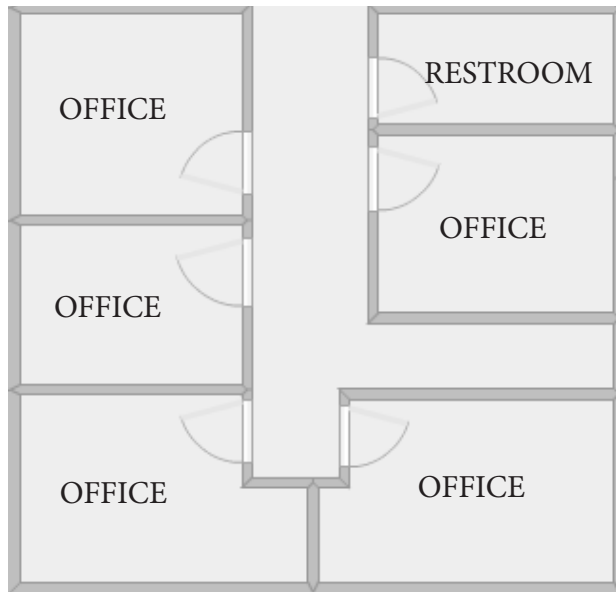


For More Information:  
 Will Nason  
 336-816-8230  
[will@freemancommercial.com](mailto:will@freemancommercial.com)  
 Charlie Freeman  
 336-768-4410  
[charlie@freemancommercial.com](mailto:charlie@freemancommercial.com)

## 1311 Westbrook Plaza Dr., Ste 106 Winston-Salem, NC 27103

- 1,100+/- SF
- Located near Winston-Salem's busiest retail corridor
- Well maintained office space
- Full Service Lease, tenant only pays rent
- Asking Rent: \$17.00/PSF, Full Service

### FLOOR PLAN:



For More Information:  
 Will Nason  
 336-816-8230  
[will@freemancommercial.com](mailto:will@freemancommercial.com)  
 Charlie Freeman  
 336-768-4410  
[charlie@freemancommercial.com](mailto:charlie@freemancommercial.com)