



## OFFICE/MEDICAL FOR LEASE

Country Club Commons  
 4622 Country Club Rd., Ste. 100  
 Winston-Salem, NC 27103

### Property Highlights

- +/- 2,532 sf available
- Class A office building, built in 2006
- Ground floor, first suite
- Ample parking, easy access to Hwy 421/I-40
- Existing tenants: Novant, Capstone Realty Consultants, Sharp Chiropractic, Loveland Dental, Brendle Financial Group, and Clarion Consulting
- Lease Rate: \$20.00 psf (\$4,220/month)  
 Full Service Lease (less janitorial)

### Demographics

	1 Mi.	3 Mi.	5 Mi.
Population	14,197	22,746	36,902
Avg. HH Inc.	\$75,524	\$73,826	\$75,832



For More Information:

**Lee Chewning**

O: 336-768-4410

M: 336-655-8063

lee@freemancommercial.com

**Abner Wright**

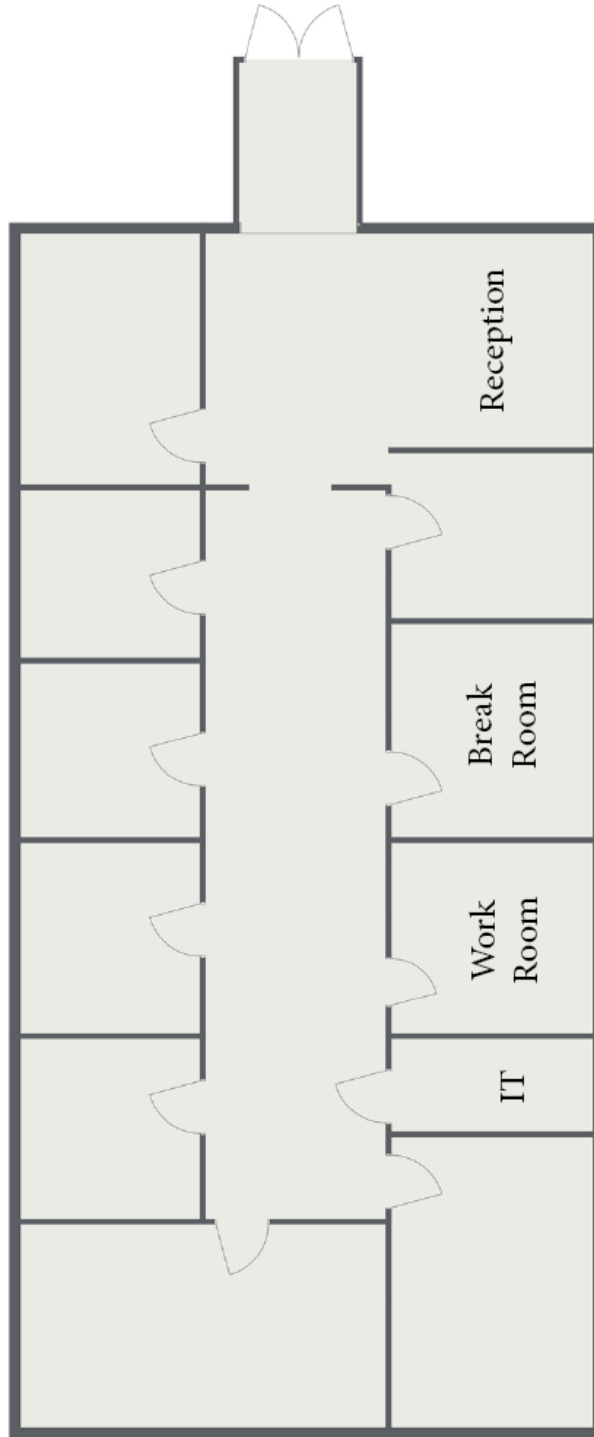
O: 336-768-4410

abner@freemancommercial.com

Location



Floor Plan



Location

