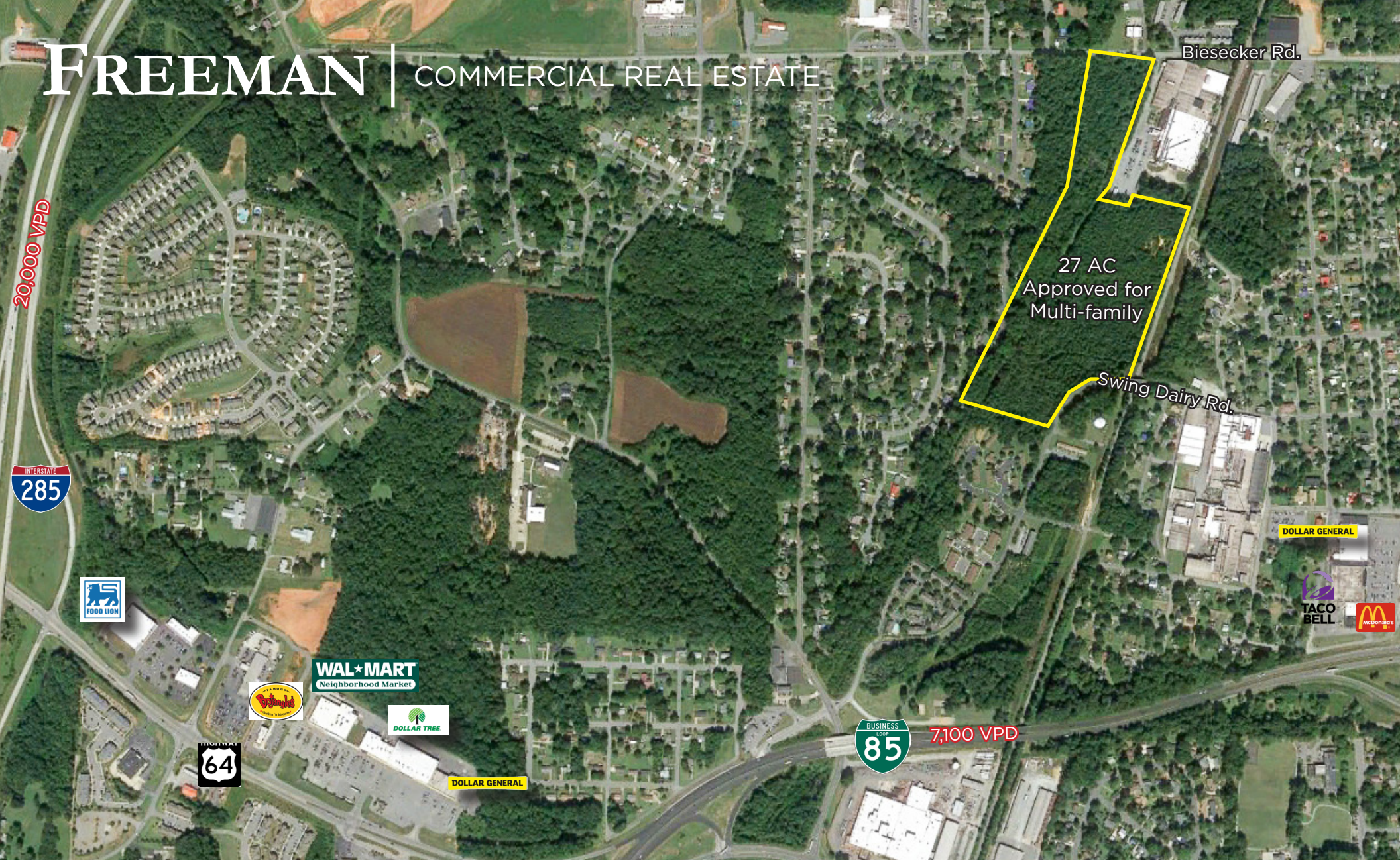


# FREEMAN

COMMERCIAL REAL ESTATE



**DEVELOPMENT OPPORTUNITY, APPROVED FOR MULTI-FAMILY**  
+/- 27 AC | LEXINGTON, NC 27295

**Bob Anderson**  
O: 336-768-4410  
[bob@freemancommercial.com](mailto:bob@freemancommercial.com)



## Biesecker & Swing Dairy Rd.

Lexington, NC 27295

Davidson County

### Property Highlights

- 27 acres - approved for multi-family
- Zoned Traditional Neighborhood (includes industrial and residential uses)
- Access from Biesecker Rd. and Swing Dairy Rd.
- Approved site plan available
- Offered at: \$450,000

### Demographics

	3 Miles	5 Miles	7 Miles
2022 Total Population	22,891	40,015	56,299
2022 Avg. HH Income	\$55,236	\$63,911	\$68,228
2022 Total Businesses	1,159	1,711	2,081
2022 Total Employees	12,602	19,015	23,955

For More Information:

**Bob Anderson**

O: 336-768-4410

bob@freemancommercial.com

